

01



02

Sipos Aktorik GmbH

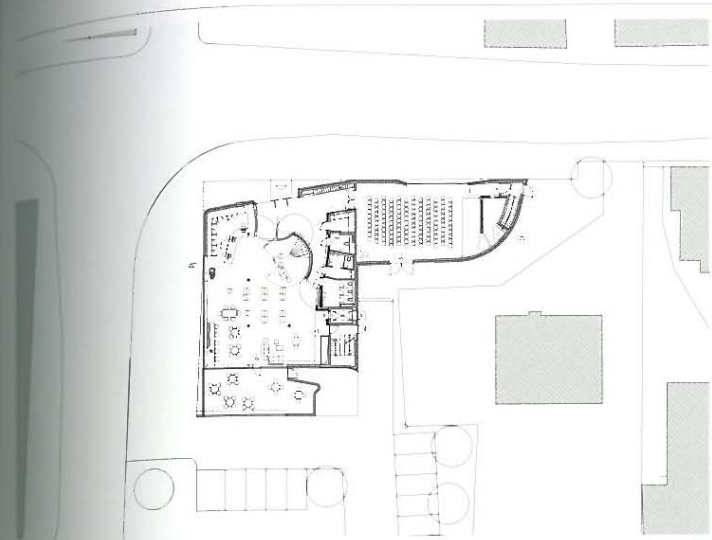
The structure of the Sipos Aktorik GmbH is divided into three parts: the assembly hall with automated warehouse, the two-story office and, attached to both of these areas, a loading and unloading area. The close proximity of the individual areas allows for easy internal communication. The usual separation between the assembly area and offices is reversed by use of a floor to ceiling glass wall, which promotes communication between these two different working environments. The naturally lit atriums in the office area connect exterior and interior, serving as an extension of the workspace. The black, reflecting glossiness of the façade is created by a transparent chromium oxide layer on the surface of the stainless steel panels.

01 Second floor plan | 02 Detail west façade | 03 Northeast view at night | 04 North-west façade with atrium

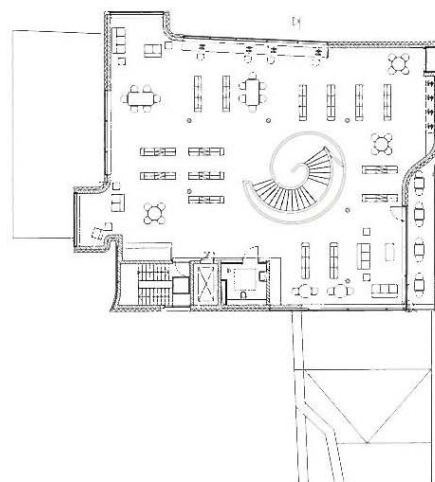


03





01



02

Mediathek Oberkirch

This three-story media center is connected by an organically formed stairwell. This centrally positioned opening serves not only as circulation space but also works in conjunction with the large glazed area above to serve as a lighting element, illuminating the interior areas. The sculptured façades act as display windows, allowing a wide view of the surrounding urban area. The outer, lighter spaces serve as a lounge, where undisturbed reading or computer work is possible. During the planning stages the focus was on designing a high quality interior and the inclusion of the outdoor space in the library concept.

01 Site plan with ground floor | 02 Second floor plan | 03 Exterior with garden of reading | 04 Staircase system | 05 Entrance | 06 Staircase first floor | 07 Exterior of meeting room



03



04



05



